

**B**ROWN UNIVERSITY HAS EMBARKED ON ONE OF THE MOST EXCITING MILESTONES IN ITS HISTORY: THE TRANSFORMATION OF A JEWELRY DISTRICT LANDMARK INTO A STATE-OF-THE-ART HOME FOR ALPERT MEDICAL SCHOOL.

**"Our medical alumni are examples of Brown's truly global reach, for they have sought to improve human health around the world for the past four decades. This building will be not only a symbol of all that has been accomplished in that time, but the guarantee that Brown physicians will pursue their noble endeavor for the next four decades, and beyond."**

EDWARD J. WING, MD  
DEAN OF MEDICINE AND BIOLOGICAL SCIENCES



For more information:

Campaign for Academic Enrichment  
Brown University  
Box 1893  
Providence, RI 02912-1893  
USA

Phone: 800 662 2266  
Phone: 401 863 2374  
Fax: 401 863 3301  
E-mail: [www.boldly.brown.edu](http://www.boldly.brown.edu)

*Boldly* | BROWN |

CAMPAIGN FOR ACADEMIC ENRICHMENT



New Doctors  
for a  
New Day

## The Medical Education Building

AT BROWN





“Brown’s new medical education building will provide a physical identity for the Alpert Medical School, helping to sustain and expand its growing position of national leadership. Additionally, its presence in the Jewelry District will serve as a catalyst for further institutional and commercial development in the City of Providence.”

RUTH J. SIMMONS  
PRESIDENT, BROWN UNIVERSITY



#### THE IMPORTANCE OF PLACE

Creating a state-of-the-art home for the Warren Alpert Medical School is one of Brown’s highest priorities. The planned facility – a renovation of an existing 137,000-square foot building – will provide the School with a physical identity that complements its growing stature on the national scene. The new space is critical to accommodating the School’s planned expansion from 96 to 120 students – Brown’s response to a national initiative led by the Association of American Medical Colleges to meet the projected physician shortage.

Locating the new facility in Providence’s Jewelry District will put medical students within walking distance of the School’s major teaching hospitals, health care facilities, and research laboratories, and yet maintain a close connection to the College Hill campus. Such proximities will support the advising and mentoring that are so integral to medical education at Brown.

Just as critically, the building will enable the School to institute the Academy system, a concept used by a growing number of medical schools nationally. In this system, each student is assigned to an “Academy” of 40 students from all four years and remains with that group throughout medical school. A senior clinical faculty member serves as a mentor and role model, and provides guidance and support. By fostering collegiality, faculty- and peer-mentoring, and a sense of connectedness, the Academy system enhances students’ formal and personal education: it provides the ideal setting for small group learning while serving as a home base and creating a feeling of community.

#### MEDICINE IN ACTION

New science requires new teaching methods. Gone are the days when medical students sat in the same lecture hall for eight hours a day. Today, small group settings characterize much of the curriculum, from medical interviewing and physical exam skills to pre-clinical courses where students work through scientific and ethical challenges collaboratively. The new building’s lecture halls and small classrooms will give faculty and students unprecedented flexibility in tailoring space to meet their teaching and learning needs while taking into account technological advances and a developing curriculum.

Anatomy class is still the cornerstone of medical education. The building’s modern, fully outfitted anatomy suite, with ample space for dissection, demonstrations, and review of x-rays and other imaging, will guarantee that this seminal experience in every medical student’s life is as rich and educational as it can be.

Plans for the building also include a clinical simulation center. This area will include a realistic outpatient care facility that will be used for student interactions with standardized patients (actors simulating patients). There will be the technological capacity to video-record student/patient interactions. In addition, this space will employ mannequins that allow students to learn procedures and techniques without the involvement of a real (and vulnerable) patient.

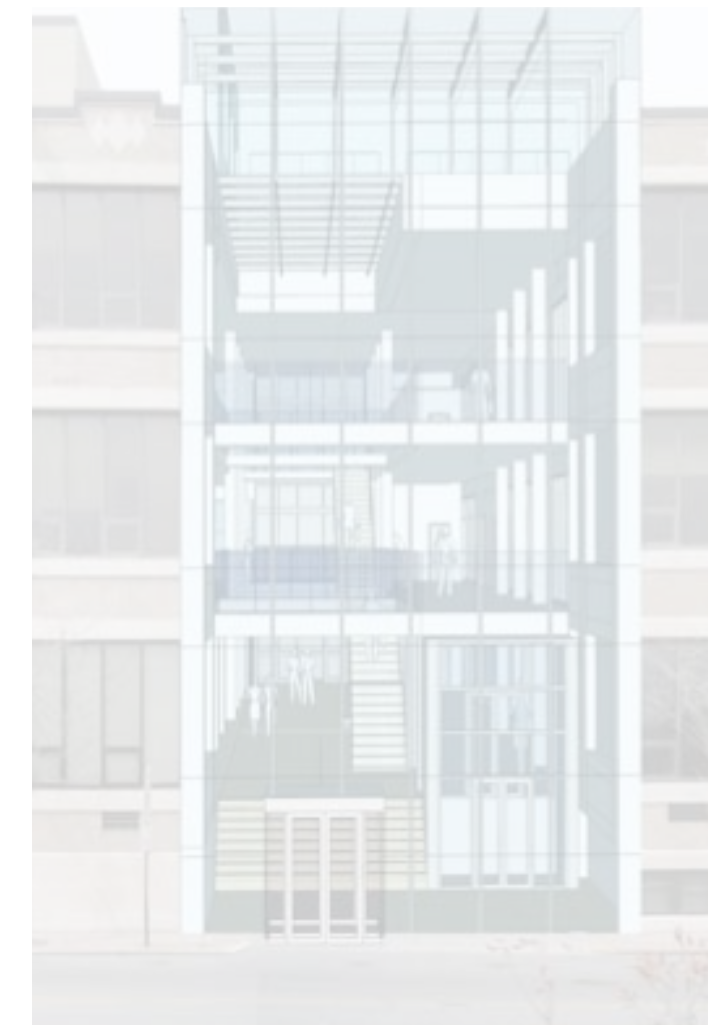
These areas, in addition to modern study space and library and computing resources, will occupy 63,000 of the building’s 137,000 gross square feet.

#### FROM JEWELRY DISTRICT TO KNOWLEDGE DISTRICT

While its importance for medical education at Brown is beyond measure, the new building will also stand as a proud symbol of Brown’s partnership with the city, the state, and the region.

The Rhode Island Department of Transportation is currently relocating Interstate 195 and thus reconnecting the Jewelry District to downtown Providence. The Jewelry District, once the site of such 19th-century manufacturing industries as textiles and jewelry, today is poised to become “the knowledge district,” a hub of innovation and discovery.

The new medical education building will play a major role in this revitalization, fostering a vibrant and diversified local economy, acting as a stimulus for sustainable, high-value-added employment in the region’s burgeoning health, science, and biotech industries, and taking its place as a national pioneer in medical research and education.



#### NAMING OPPORTUNITIES IN THE MEDICAL EDUCATION BUILDING

MEDICAL EDUCATION BUILDING	\$25 MILLION
ANATOMY SUITE	\$10 MILLION
ATRIUM	\$5 MILLION
ACADEMY ROOMS (3)	\$2.5 MILLION
PHYSICAL EXAM TRAINING SUITE	\$2 MILLION
LECTURE HALLS (2 with 150+ seats)	\$1.5 MILLION
FITNESS ROOM	\$1 MILLION
SIMULATION CENTER	\$1 MILLION
RESOURCE CENTER/EXECUTIVE BOARDROOM	\$500,000
CASE STUDY ROOMS (3)	\$500,000
ADMINISTRATIVE OFFICE SUITE	\$250,000
SEMINAR ROOMS (16)	\$250,000